

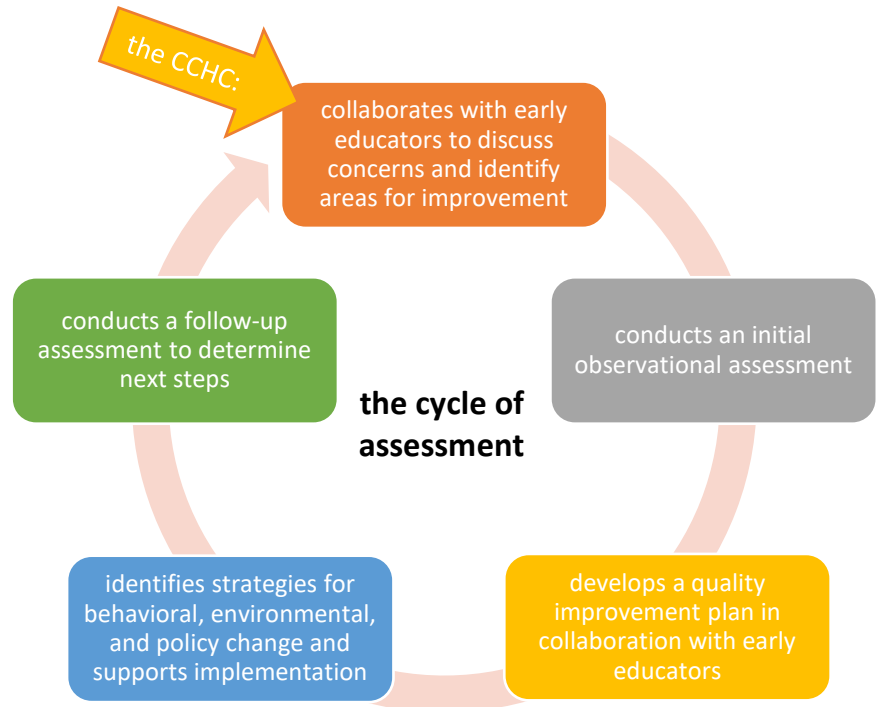
North Carolina Health and Safety Assessment Tool (HSAET)

The NC Health and Safety Assessment and Encounter Tool (NC HSAET) is a web-based tool used by CCHCs working in North Carolina to assess the health and safety behaviors and environment of early care and education programs. The HSAET was revised in 2021 by the NC Resource Center staff in collaboration with the [Cecil G. Sheps Center for Health Services Research at UNC](#) and includes:

- Thirteen sections that align with the [Child Care Health Consultant Competencies](#)
- The ability to document encounters with early childhood educators, including technical assistance, trainings, meetings, and communication.

Assessment: The NC HSAET includes a pre- and post-assessment component where CCHCs document their observations of the child care environment:

- **Targeted consultation:** Short-term technical assistance, typically focused on a specific issue or pre-identified need. One or two sections of the HSAET are used to identify areas for improvement and target interventions.
- **Comprehensive consultation:** Long-term technical assistance focused on multiple topics. All or most of the HSAET sections are used to identify what areas of health and safety are most in need of intervention strategies.
- **Training:** When a CCHC is asked to provide training, the CCHC selects sections from the NC HSAET that pertain to the training to help identify areas to emphasize in the training. A follow-up assessment is used to measure behavioral and environmental changes as a result of the training.



Encounters: A CCHC enters data into the NC HSAET anytime they have an encounter with a child care facility or community partner. Data collected includes:

- Training and outreach data, when a CCHC
 - sends communication to staff at multiple agencies
 - leads, co-leads, presents at or participates in a meeting
 - participates in an event, such as a community health event
 - provides a training for staff at more than one facility
- Facility specific data
 - Documentation for encounters, without or without an observational assessment conducted, and/or facility specific trainings.

North Carolina Health and Safety Assessment Tool (HSAET)

NC HSAET Sections

The NC HSAET assessment indicators are divided into 13 sections. Each section's **indicators** were developed to assess the health and safety practices in a facility.

1. Illness and Infectious Diseases
 - Daily health checks, immunizations, exclusion, handwashing, diapering, toileting, sanitation, food handling to prevent illness in the classroom.
2. Children with Special Healthcare Needs
 - Medical Action Plans, accessibility, accommodations, inclusive environments.
3. Medication Administration
4. Safety and Injury Prevention
 - Safety in indoor and outdoor environment, safe eating, supervision, safe sleep.
5. Emergency Preparedness, Response, and Recovery
6. Infant and Child Social Emotional Wellbeing
7. Child Abuse and Neglect
8. Physical Activity
9. Nutrition
10. Oral Health
11. Environmental Health
 - Exposure to toxins (lead, radon, tobacco, toxic materials), indoor and outdoor air quality, pest management, safe food handling in the kitchen.
12. Staff Health and Wellness
 - Bloodborne Pathogen Standards, workplace accommodations, staff health education and health promotion, resources and referrals to community resources, staff professional development.
13. Policy Development and Implementation

Accessing the NC HSAET and data from the tool

Active CCHCs have access to the NC HSAET once they and their supervisor have signed the [New User Application and Agreement Form](#). A CCHC supervisor or program evaluator may also be added as a Report Viewer so they can review data inputted by the CCHC they support.

All data collected is stored in a secure server housed by the University of North Carolina, Chapel Hill. Aggregate data is used to assess and demonstrate the effectiveness and impact of CCHC services. Access to the data is limited to those individuals approved by the NC Health and Safety Assessment and Encounter Tool administrators.

For more information on the NC HSAET

The NC HSAET Training manual is accessible to CCHCs in the CCHC Portal. Supervisors and/or evaluators can request a copy of the Training Manual for more detailed information on reports and other components of the tool. Contact the NC Resource Center (nchsaet@unc.edu) with any questions about the NC HSAET.